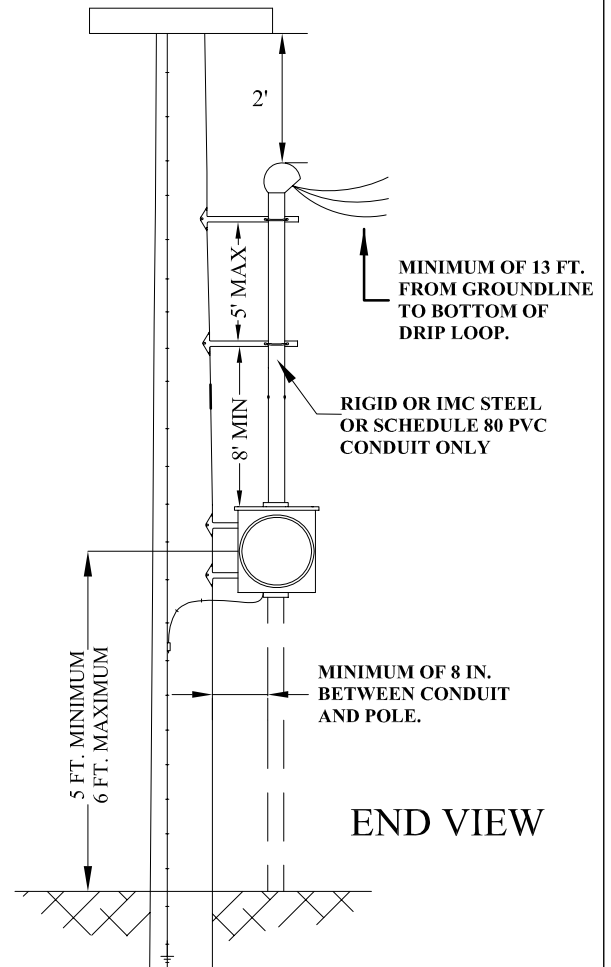
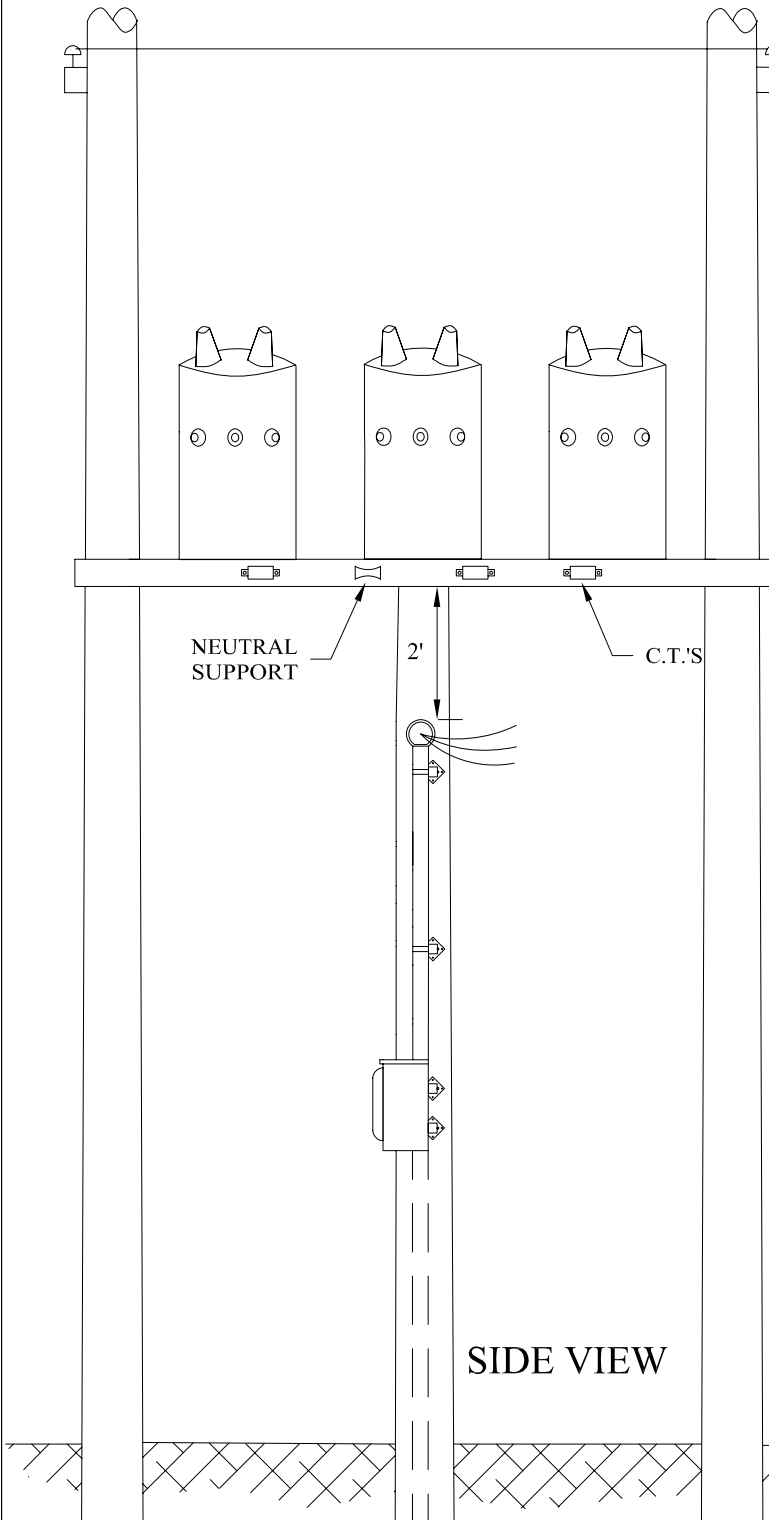


# PLATFORM TRANSFORMER BANK INSTALLATION GUIDE

## NOTES:

1. METERING TO BE INSTALLED AFTER THE INSTALLATION OF B.B.E.C. EQUIPMENT AS CONDUIT LENGTHS ARE DEPENDENT ON POLE SIZE AND EQUIPMENT ON POLE.
2. ALL CONDUITS AND METERING TO BE INSTALLED ON STAND-OFF BRACKETS WITH A MINIMUM OF 8 IN. OF CLEARANCE BETWEEN THE CONDUIT AND THE POLE.
3. 5' TAILS REQUIRED ON SERVICE CONDUCTORS AND 13' TAILS REQUIRED ON METERING WIRES.
4. METER BASE RISER CONDUIT SHALL BE RIGID OR IMC STEEL OR SCHEDULE 80 PVC.
5. METER LOOP, CONDUITS OFFSET BRACKETS AND WIRING TO BE SUPPLIED AND INSTALLED BY A QUALIFIED WORKMAN.
6. METER LOOP SPECIFICATIONS ON A SEPARATE DIAGRAM SUPPLIED WITH THIS GUIDE.
7. DEPENDENT ON YOUR SERVICE INSTALLATION, A MAIN BREAKER MAY BE REQUIRED. CONTACT ELECTRICIAN OR L & I PRIOR TO INSTALLING YOUR METERING EQUIPMENT.



**BIG BEND ELECTRIC COOP, INC.  
RITZVILLE, WA**

**DIAGRAM M**

Drawn By: J.R.L.

Date: 3/24/09

Approved By: C.A.C.

Date: 4/27/09