

# METER / BREAKER COMBINATION UNDERGROUND SERVICE - SINGLE PHASE

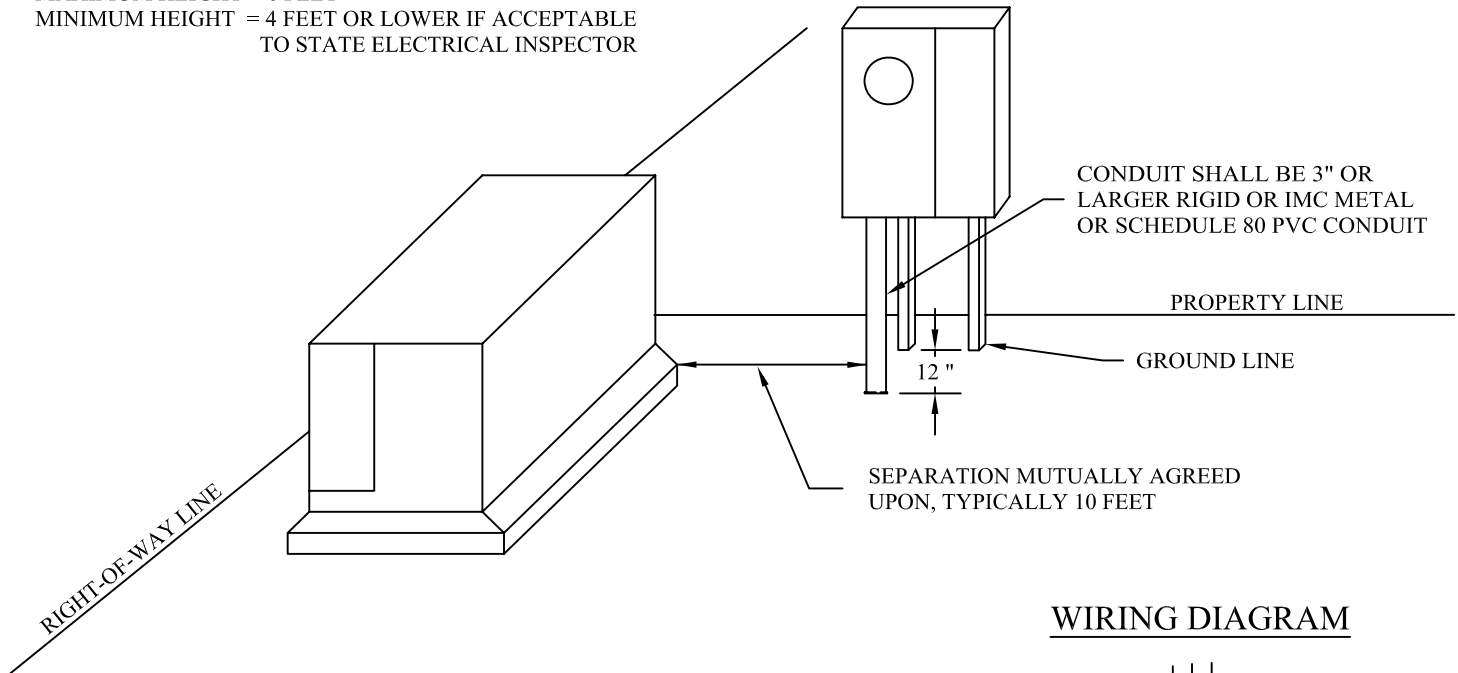
## 120/240 VOLTS - SELF CONTAINED

### METER HEIGHT REQUIREMENTS

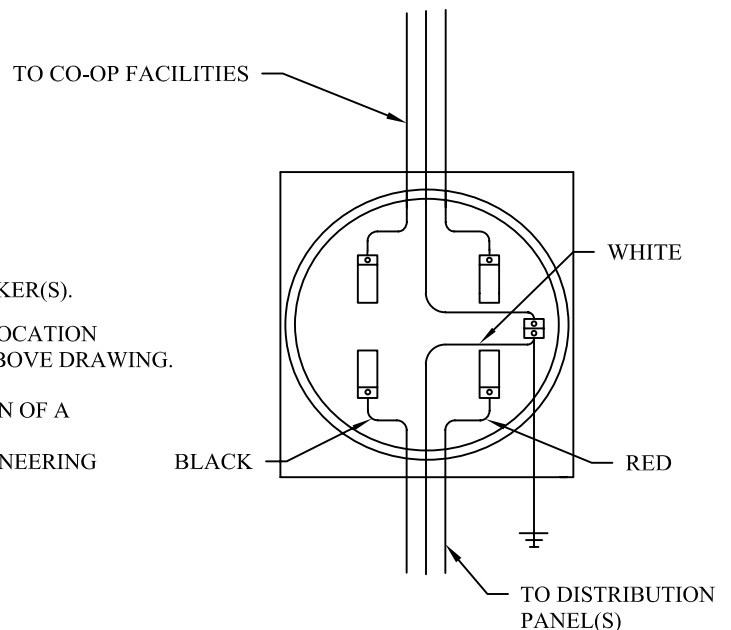
FROM CENTER OF METER TO GROUND LEVEL

MAXIMUM HEIGHT = 6 FEET

MINIMUM HEIGHT = 4 FEET OR LOWER IF ACCEPTABLE  
TO STATE ELECTRICAL INSPECTOR



### WIRING DIAGRAM



METER BASE, 4 JAW

CIRCLE A-W CATALOG NO. U404-2MCC  
OR APPROVED EQUIVALENT

### REQUIREMENTS:

1. METER LOOP MUST BE EQUIPPED WITH FUSES OR CIRCUIT BREAKER(S).
2. METER LOOP MUST BE LOCATED IN A MUTUALLY AGREEABLE LOCATION ALONG PROPERTY LINE, ADJACENT TO CO-OP FACILITIES, SEE ABOVE DRAWING.
3. METER LOOP WILL INCLUDE PROVISIONS FOR THE INSTALLATION OF A SELF CONTAINED METER, METER SUPPLIED BY THE CO-OP.  
C.T. INSTALLATIONS REQUIRE PERMISSION OF THE CO-OP'S ENGINEERING DEPT. PRIOR TO INSTALLATION OF THE METER LOOP.
4. CO-OP WIRE SHALL ENTER METERING CABINET IN 3" OR LARGER RIGID OR IMC METAL CONDUIT OR SCHEDULE 80 PVC ONLY.
5. WAC 296-46-160 REQUIRES THE ELECTRICIAN TO CONTACT THE CO-OP PRIOR TO THE INSTALLATION OF THE METER LOOP.

**BIG BEND ELECTRIC COOP, INC.  
RITZVILLE, WA**

**DIAGRAM N**

Drawn By: M. R. B.

Date: 12/18/01 REVISED 4/14/04

Approved By: D. R. B.

Date: 4/14/04