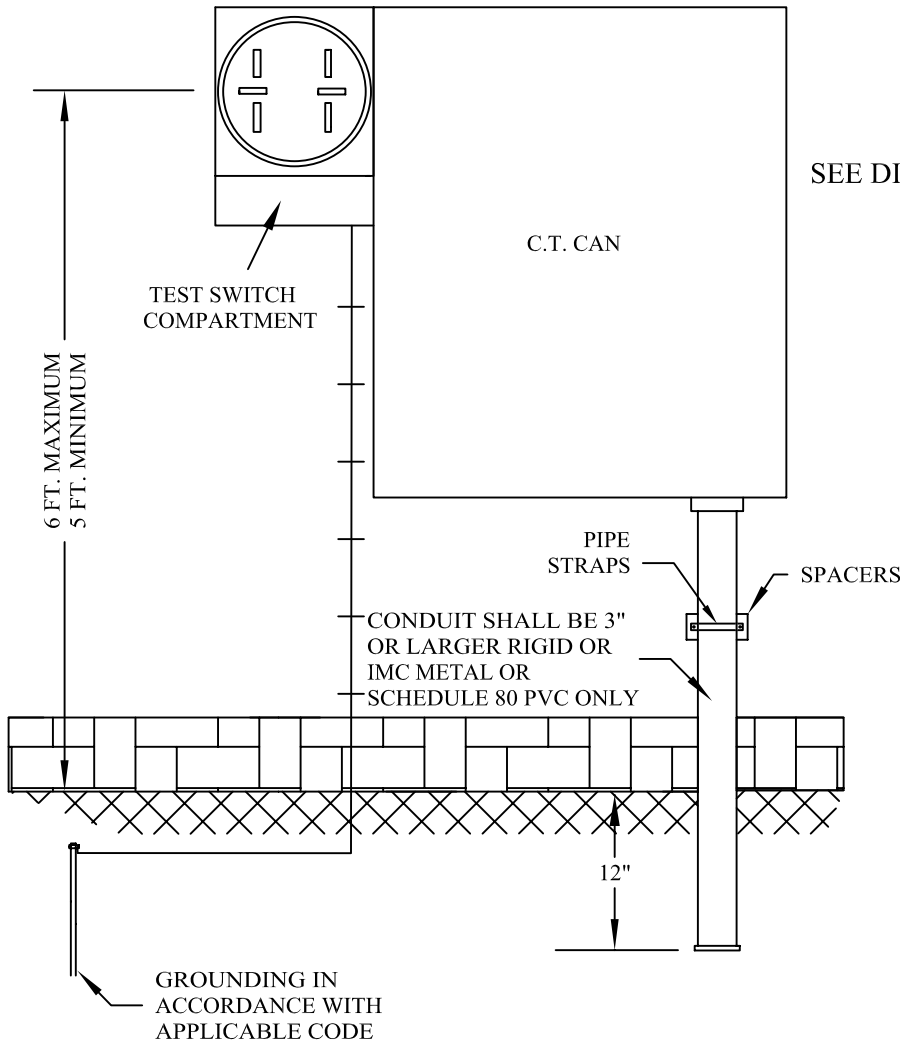


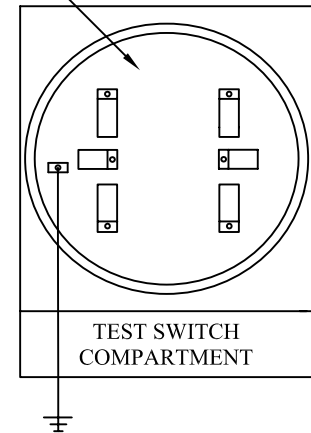
# HOUSE SERVICE, UNDERGROUND - SINGLE PHASE

## 120/240 VOLTS C.T. METERING



### WIRING DIAGRAM

SEE DIAGRAM 8B



TEST SWITCH, 7 POLE

MILBANK CATALOG #TS07-0105  
OR APPROVED EQUIVALENT

METER BASE, 6 JAW

MILBANK CATALOG #UC3436-XL  
OR APPROVED EQUIVALENT

### REQUIREMENTS:

1. METER BASE SHALL BE LOCATED ON A SIDE OF THE BUILDING FACING THE COOPERATIVES FACILITIES.
2. METER LOOP WILL INCLUDE PROVISIONS FOR THE INSTALLATION OF A CURRENT TRANSFORMER RATED METER, METER SUPPLIED BY THE CO-OP.
3. METER BASE MUST BE CURRENT TRANSFORMER RATED AND MUST BE EQUIPPED WITH TEST SWITCHES.
5. CURRENT TRANSFORMER ENCLOSURE MINIMUM SIZE TO BE SPECIFIED BY THE CO-OP, DEPENDENT ON CONDUCTOR SIZE AND WILL INCLUDE PROVISIONS FOR THE INSTALLATION OF A WINDOW TYPE CURRENT TRANSFORMER.
6. CO-OP WIRE SHALL ENTER METERING CABINET IN 3" OR LARGER RIGID OR IMC METAL OR SCHEDULE 80 PVC CONDUIT ONLY.
7. METER LOOP MUST BE EQUIPPED WITH FUSES OR CIRCUIT BREAKER(S).
8. WAC 296-46-160 REQUIRES THE ELECTRICIAN TO CONTACT THE CO-OP PRIOR TO THE INSTALLATION OF THE METER LOOP.

**BIG BEND ELECTRIC COOP, INC.**  
**RITZVILLE, WA**

Drawn By: M. R. B.

Date: 12/13/01 REVISED 4/14/04

Approved By: D. R. B.

Date: 4/14/04

DIAGRAM V1